

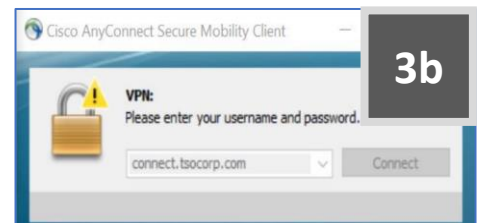
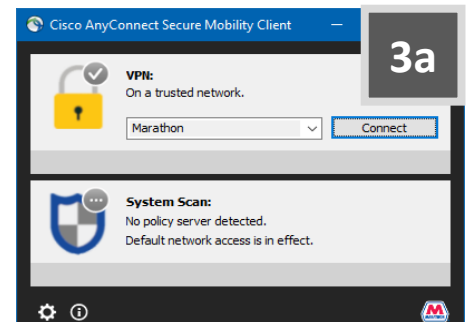
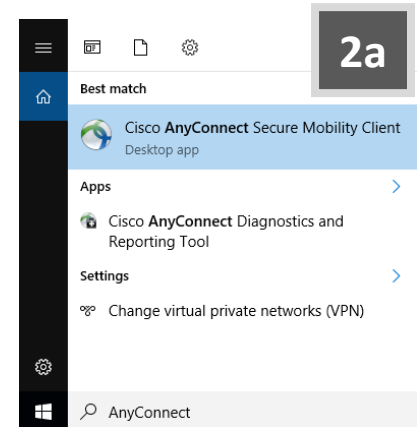


How To: Use the Cisco AnyConnect VPN to connect remotely from your company PC

To access Marathon or Andeavor resources from a public network (home, hotel, cellular, etc.) use **Cisco AnyConnect** to get connected from anywhere with an internet connection.

Connect Using AnyConnect:

- 1.) Ensure you're **Connected to the Internet**
- 2.) Type "**AnyConnect**" in the **Search Windows box**, and select the **Cisco AnyConnect Secure Mobility Client**
- 3.) Verify your Profile and click Connect:
 - a. For **Marathon devices**, verify the profile shows as *Marathon*. You do not need to enter a username/password.
 - b. For **Andeavor devices**, verify the profile shows as *connect.tsocorp.com*. Your username will be populated, but you will need to enter your WAccount password in the prompt.
- 4.) It may take **between 20 and 30 seconds** to establish a connection. Don't worry – this is normal!
 - a. **Marathon device** users may see several pop-ups in the lower-right corner of the screen.
 - b. **Andeavor users** may not see these messages, as a successful connection status will be displayed in the AnyConnect client.
- 5.) Once connected:
 - a. **MPC device users** will see the Network access allowed pop-up, the AnyConnect icon in the tray will change to a green checkmark  for MPC users.
 - b. **Andeavor device users** will see their wireless network logo change to a wired connection icon .



Questions or Concerns?

Please contact the **MPC Service Desk** for questions, concerns, or additional connectivity assistance.